

J.C.
HOLDWAY

RESTAURANT

SATURDAY, MAY 18, 2024

SNACK PLATES

- Green Romesco Dip**, chickpeas, pickled shallots & caraway seed crackers 9
- Charred Onion Dip**, Paddlefish caviar & JCH potato chips* 20
- Scallion Hushpuppies**, bbq onion aioli (4) 8
- Smoked Chicken Wings**, Alabama white sauce (5) 12
- Grilled Shrimp**, chervil & lemon oil (4) (gf) 15
- Oysters on the Half Shell**, hibiscus mignonette* (gf) Half-Dozen | Dozen 23 | 45



SMALLER PLATES

- Slow Cooked Farm Egg**, gnocchi, chicken confit & mushrooms* 15
- Roasted Meatballs**, charred onion broth, watercress & peas (gf) 15
- Tuna "Poke"**, strawberries, charred spring onion vinaigrette & garden herbs* (gf) 20
- Pea Salad**, arugula, charred peas, preserved lemon & mint (gf) 14
- Kale Salad**, smoked trout, creamy garlic vinaigrette, parmesan & cornbread crumble* (gf) 15
- Shaved Beet Salad**, whipped goat cheese, Dukkah spice, ramp honey vinaigrette & arugula (gf) 15

PASTAS

ALL PASTAS ARE HANDMADE ON PREMISE AND INTENDED TO BE A MID-COURSE

- Gnudi**, fava beans, maitake mushrooms, summer black truffle & corn miso butter 32
- Orecchiette**, shrimp, snap peas, ramps, trout roe & beurre blanc* 28
- Mafaldine**, spinach pistou, peas, guanciale & parmesan 25

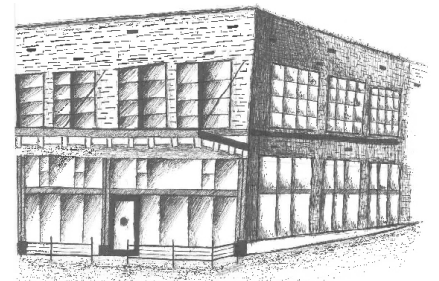
LARGER PLATES

- Roasted Chicken**, roasted potatoes, grilled asparagus, pickled ramps, Benton's bacon & white cheddar fonduta (gf) 30
- Charcoal Grilled Pork Loin**, tasso farotto, grilled spring onion & mole butter* 31
- Whole Grilled Trout**, broccolini, spinach, carrots, charred lemon vinaigrette & horseradish cream* (gf) 49

16oz Grilled Prime Ribeye, bernaise sauce & crispy potato* 67

SIDES

- Grilled Asparagus**, white cheddar fonduta, pickled ramps & cornbread crumble (gf) 11
- Grilled Broccolini**, gribiche & Aleppo pepper (gf) 11
- Potato Purée** (gf) 9
- Cornbread** & Muddy Pond sorghum butter (gf) 9



BEHIND THE SCENES

EXECUTIVE CHEF **Joseph Lenn** | CHEF DE CUISINE **Mauro Chavez**

DAYLIGHT BUILDING est. 1927

CONSUMING RAW OR UNDERCOOKED MEATS, POULTRY, SEAFOOD, SHELLFISH OR EGGS MAY INCREASE YOUR RISK OF FOODBORNE ILLNESS.
EVERY EFFORT WILL BE MADE TO ACCOMMODATE FOOD ALLERGIES. SHOULD WE BE UNABLE TO DO SO, WE APOLOGIZE IN ADVANCE.
INGREDIENTS ARE SUBJECT TO CHANGE WITH AVAILABILITY. 20% SERVICE CHARGE ADDED FOR PARTIES OF 6 OR MORE.

J.C.
HOLDWAY

RESTAURANT

WINES BY THE GLASS

WHITES & SPARKLING

Mestres 1312 • Cava • Spain • NV 14
 Scarpetta • Pinot Grigio • Friuli • '22 10
 Schlosskellerei Gobelsburg • Grünerveltliner • Kamptal • '22 14
 Huia • Sauvignon Blanc • Marlborough • '23 14
 Emillo Moro • Polvorete • Bierzo • '22 13
 The Fableist • Chardonnay • Edna Valley • '22 15

ROSÉ & REDS

La Spinetta • Rosé • Toscana • '22 14
 Averaen • Pinot Noir • Willamette Valley • '22 17
 Santa Maria • Valpolicella • Classico Superiore • '20 15
 J.L. Chave • Mon Coeur • Côtes du Rhône • '22 16
 Turley • Juvenile • Zinfandel • California • '22 17
 Salentein • Cabernet • Mendoza • '22 16

ROSÉ

La Spinetta, Rosé, Toscana, Italy, '21 50

SPARKLING

Mestres 1312, Cava, Spain, NV 50
 Delamotte, Rosé, Champagne, NV 300
 Coquillet, Les Clés, Blanc de Noirs, Champagne, NV 146
 Gonet Medeville, Tradition, Champagne, NV 142
 Saint-Chamant, Champagne, N/V (375 ml) 90
 Massolino, Moscato d' Asti, Italy, '22 (375 ml) 32

OLD WORLD WHITE WINES

Scarpetta, Pinot Grigio, Friuli, Italy, '21 40
 Salz Der Erde, Riesling, Rheingau, Germany, '20 85
 Charles Audoin, Aligote, Bourgogne, France, '21 91
 Fabien Trosset, La Dèvière, Roussette de Savoie, France, '21 65
 Yves Martin, Chavignol, Sancerre, France, '22 92
 Damien Laureau, Les Genêts, Savennières, France, '20 132
 Moreau Naudet, Petite Chablis, France, '22 96
 Jean Marc Brocard, Fourchaume, 1er Cru, Chablis, France, '22 .. 111
 Dominique Cornin, Pouilly-Fuisse, France, '21 118
 Remoissenet, Puligny Montrachet, France, '20 199
 Château de la Font du Loup, CDP, France, '21 150
 Jean-Marc Brocard, St. Claire, Chablis, France, '21 (375 ml) 35
 FX Pichler, Ried Klostersatz, Grüner Veltliner, Wachau, '22 92
 Valesil, Montenova, Godello, '22 55

NEW WORLD WHITE WINES

Groth, Sauvignon Blanc, Napa Valley, '23 77
 Terra Rouge, Monarch Mine, Roussane, Sierra Foothills, '14 75
 Alban, Viognier, Central Coast, '22 75
 Levendi, Chardonnay, Napa Valley, '21 79
 Giant Steps, Seyton Vineyard, Chardonnay, Yarra Valley, '19 129

OLD WORLD RED WINES

Monthelie Douhairet-Porcheret, Monthélie, Monopole, '21 127
 Clos St. Jean, CDP, France, '19 135
 Domaine de Trevallon, Alpilles, France, '12 250
 Il Palazzone, Brunello di Montalcino, Italy, '18 175
 Dei, Vino di Noblie Montepulciano, Italy, '19 75
 G.D. Vajra, Bricco delle Viole, Barolo, Italy, '19 240
 Massolino, Barolo, Italy, '19 148
 Il Fauno di Arcanum, Toscana, Italy, '20 109
 Caparzo, Brunello di Montalcino, Italy, '18 (375 ml) 65
 Clos Erasmus, Priorat, Spain, '20 350
 Finca La Montesa, Viñedo Esencial, Rioja, Spain, '20 67
 Vina Pedrosa, Pedrosal, Ribera del Duro, Spain, '15 85
 R. Lopez de Heredia, Viña Tondonia, Rioja, Spain, '12 (375 ml) 65

NEW WORLD RED WINES

Ochota Barrels, Texture Like Sun, South Australia, '23 99
 Valrav, Pinot Noir, Sonoma County, '22 80
 Ramey, Pinot Noir, Russian River Valley, '18 144
 Domaine Della, Pinot Noir, Sonoma Coast, '21 175
 Lioco, Inica, Mendocino County, '19 65
 Neyers, Sage Canyon, California, '20 71
 McPrice Myers, Beautiful Earth, Paso Robles, '21 75
 Painted Fields, Old Vine Zinfandel, Sierra Foothills, '21 65
 Once & Future, Palisades, Petite Sirah, Napa Valley, '19 150
 Herman Story, First Time Caller, Petite Sirah, Paso Robles, '21 . 165
 The Walls, Stanley Groovy, Red Mountain, '20 88
 Force Majeure, Syrah, Red Mountain, '19 206
 Alban, Patrina, Syrah, Edna Valley, '20 142
 Once & Future, Oakley Ranch, Mataro, Contra Costa Co., '20 80
 Boekenhoutskloof, The Chocolate Block, Swartland, '21 97
 Fess Parker, The Big Easy, Santa Barbara County, '20 77
 L'Adventure, Estate, Paso Robles, '17 185
 Lewis, Mason, Cabernet, Napa Valley, '21 175
 Keplinger, Oakville Ranch, Cabernet, Napa Valley, '19 275
 Double Diamond, Oakville, Cabernet, Napa Valley, '19 215